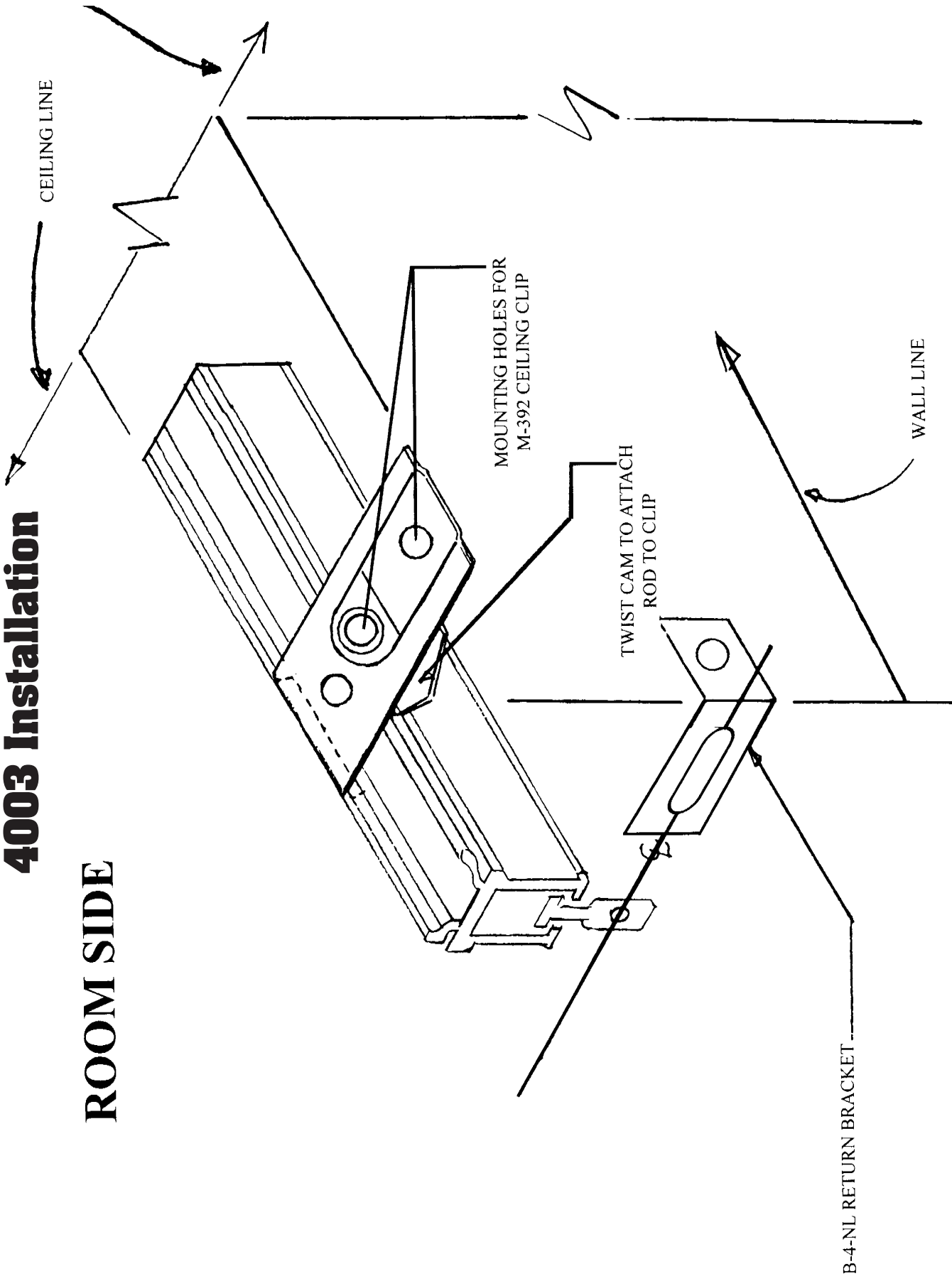
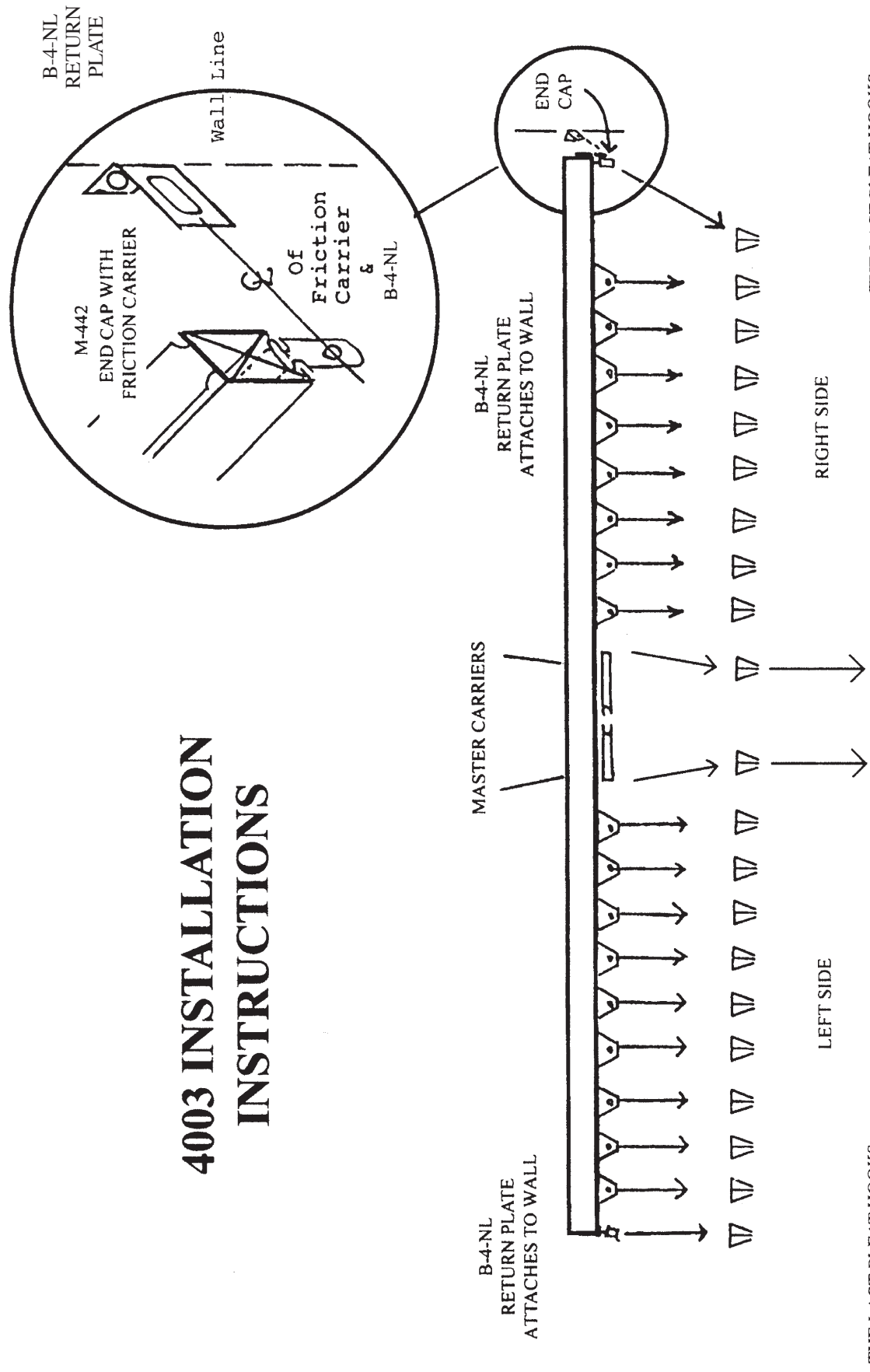


4003 Installation

ROOM SIDE



4003 INSTALLATION INSTRUCTIONS



THE LAST PLEAT HOOKS INTO THE END CAP AT END OF ROD

THE LAST PLEAT HOOKS INTO THE END CAP AT END OF ROD

THE 1ST PLEAT NEXT TO THE OVERLAP MASTER ON EACH SIDE DOES NOT REQUIRE A CARRIER. IN FACT, IT DOES NOT EVEN GET A HOOK.

THE LAST PIN ON THE RETURN SIDE OF THE DRAPERY HOOKS INTO THE RETURN PLATE (B-4NL) ATTACHED TO THE WALL.